

NH fuse switch-disconnector size 1, 250 A, bus-mounting, connection top/bottom (33 325)



Description

Article

Part No.: 33 325

QUADRON® 60Classic

NH fuse switch-disconnector size 1, 250 A, bus-mounting, connection top/bottom

connection screw M10

with electronic fuse monitoring and CrossLink® Technology

for busbars 12, 15, 20, 25, 30 x 5, 10 and section busbars

System

60Classic

Product group 09

Subgroup 28

pack size 1

EAN 4021267333256

Advantages of the product

CrossLink® adapter technology

Fast and safe conversion of the connection for top or bottom; the parts under voltage remain shock protected

Simple and safe clicking into place and making contact

Safe connection through shock protection split into two

Busbar supports for flat busbars can be mounted above each other

Self-closing test holes are available in the cover.

Catalog page 2015 : 2/25, 2/29

eCl@ss 6.1 27142108

eCl@ss 7.1 27142108

ETIM 4.0 EC001040

ETIM 5.0 EC001040

Approvals

Standards

IEC 60947-1:2007 + A1:2010 + A2:2014

IEC 60947-3:2008 + A1:2012

Approvals

IEC (CB), UL, VDE, CCC



for UL feeder circuits >250V

Type number: QCB-NH1

UL file: E230163, UL category (for USA): IZLT2 <http://www.ul.com>

CCC certificate: 2012010302563561

Product data

Electrical data

Rated current (IEC): 250 A

Rated voltage (IEC) AC: 690 V

Rated voltage (IEC) DC: 250 V

Rated current (UL): 250 A
Rated voltage (UL) AC: 600 V

Utilisation category AC-22B (400 V)
AC (IEC 60947-3) : AC-23B (400 V/ 160 A)
AC-21B (500 V)

Für höhere Gebrauchskategorien kann das Produkt mit Löschkammern nachgerüstet werden (s. Zubehör)

Power dissipation:

The power dissipation at a typical load of 80% of the rated current results to 16.6 W.
(The power dissipation for operation with rated current would be 26 W.)

rated isolation voltage U_i (AC): 800
V

Rated surge voltage U_{imp} : 2 kV

max. permitted voltage (IEC) AC: 690
V

max. permitted voltage (IEC) DC: 250
V

cond. rated short-circuit current with fuses: 80 kA / 690
V

approved with fuse links of characteristics: gG

SCCR: 100 kA

for fuse links IEC 60269-2-1 (I) / DIN VDE 0636-201 size 1 up to 23W power dissipation, with grip lugs under voltage

Special operating conditions corresponding to IEC / EN 61439-1 may yield to faulty activations of pilot switches and fuse monitors. The operating conditions have to be considered for the analysis of status signals.

Entsprechend den angegeben AC- und DC- Schalteigenschaften und unter Berücksichtigung der Überlastbedingungen, sind gewisse Abstände zu geerdeten Metallteilen einzuhalten. Nähere Informationen auf Anfrage.

Bei Verwendung als Trennschalter ist die Einhaltung der Abstände nicht erforderlich.

Schutzart IP30 frontseitig, im Anschlussbereich vom Einbau abhängig

Elektronische Sicherungsüberwachung:

- Zur Erkennung von Sicherungsausfällen mit Bemessungsspannung AC 100V bis AC 690V
- Keine Hilfsenergie erforderlich; Versorgung über Netzspannung
- Hilfskontakte potentialfrei
- LED- Blinkmelder (rot/grün)
- Testtaster
- Weitere Informationen unter Downloads / Datenblatt

Mechanical data

W x H x D: 184 x 243 x 169

Weight: 223 kg/100

Poles: 3-pole

for busbars: 12, 15, 20, 25, 30 x 5, 10 and section busbars

front degree of protection: IP30

Terminal points

screw M10

Material properties

Main body: temperature stability 125°C,
self-extinguishing in acc. to UL 94,
creepage resistance CTI 600,
halogen-free

Shock protection cover: temperature stability 125°C,
self-extinguishing in acc. to UL 94,
creepage resistance CTI 200

Handle: temperature stability 125°C,
self-extinguishing in acc. to UL 94,
creepage resistance CTI 200,
halogen-free

Adapter plate: temperature stability 125°C,
self-extinguishing in acc. to UL 94,
creepage resistance CTI 600,
halogen-free

Contacts: spring-loaded copper contacts, silver plated

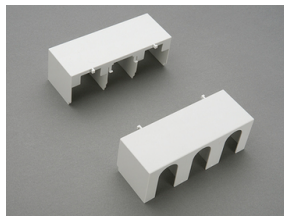
Connecting screws: screw M10, galvanized, chromized

Version

Variant with electromechanical fuse monitoring: 33 160

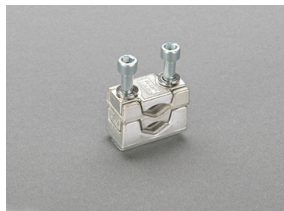
Variant without fuse monitoring: 33 601

Accessories



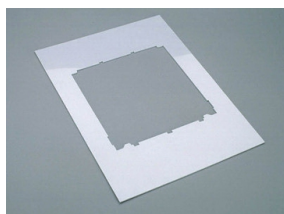
33 142

cover for cable lugs, top/bottom attachable
for NH fuse switch disconnecter size 1



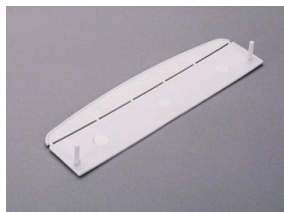
33 145

prism terminal, double, for Cu cables
2x 35-70 mm²
size 1



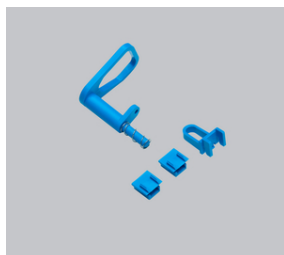
33 152

Trim frame
215 x 330
size 1



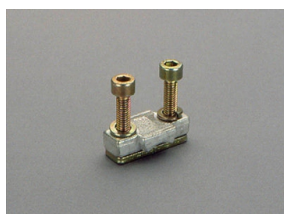
33 155

barrier for handle for NH fuse-switch disconnecter size 1-3
for closing of handle area from rear



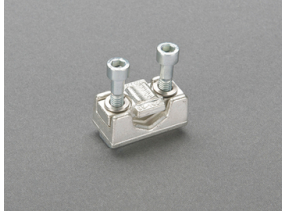
33 157

lid interlock
for sealing wire or 3 padlocks with shackle of 4-7 mm
Size 1 - 3



33 163

clamp connector for Cu cables
70 - 150 mm²
size 1

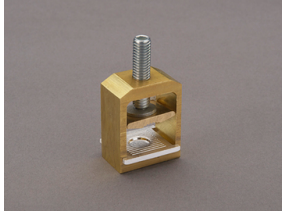


33 166

prism terminal, single, for Cu and Al cables

35 - 150mm²

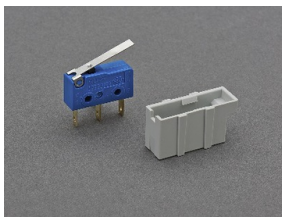
size 1



33 909

box terminal for Cu cables

35 - 150 mm²

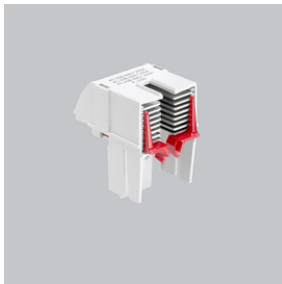


33 917

pilot switch

changeover 250 V AC / 5 A; 30 V DC / 4 A

Size 1



33 918

arcing chamber

retrofit package for higher utilisation category

for QCB-NH1